

Set up:	HPT CROSSOVER
Month Tested	March
WIN RATIO:	82.00%

Required Specifications

Graphical

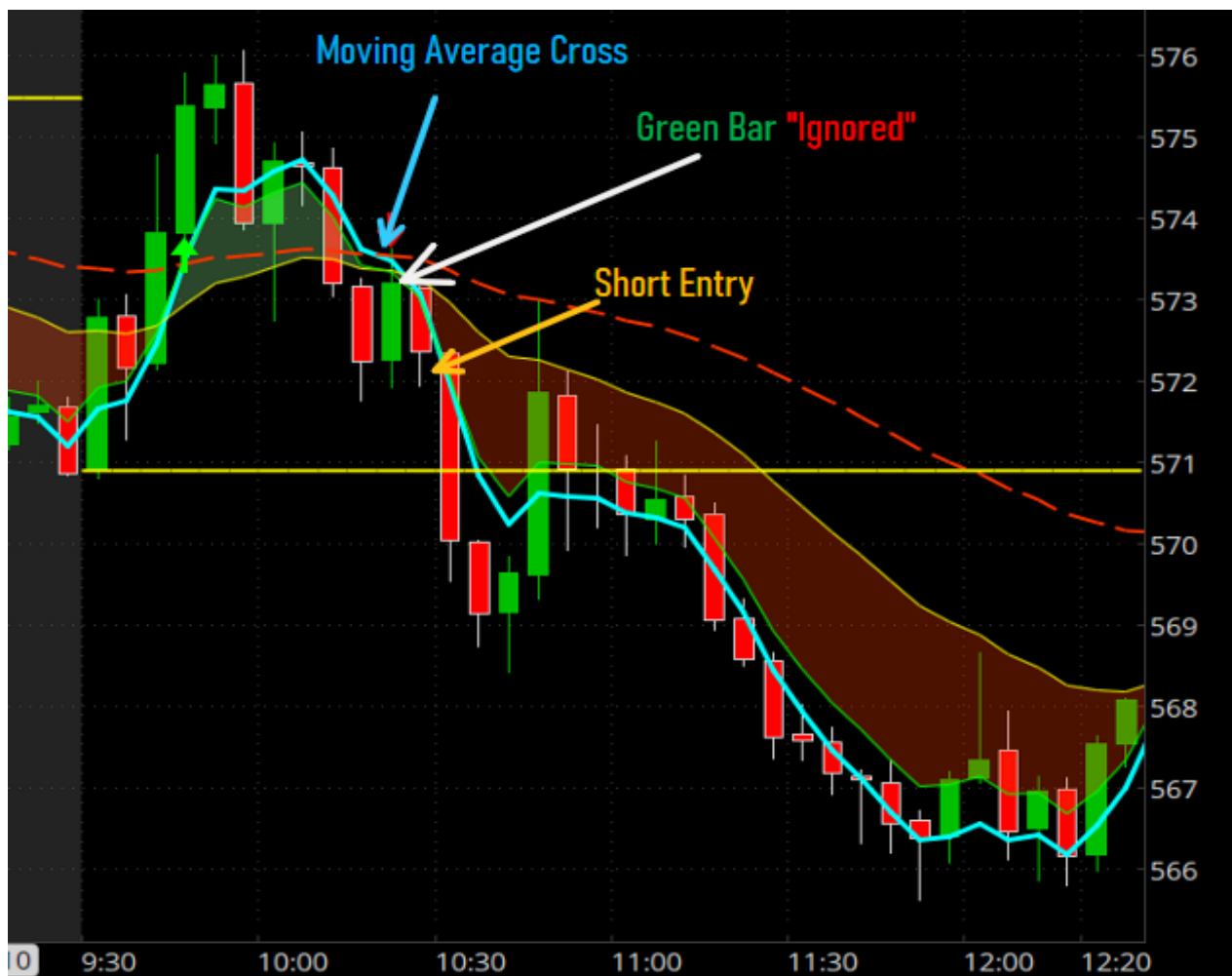
Critical Level	Open Print
Moving Average Cross	5 & 21 EMA
Entry Criteria	RBI/GBI
Specfic Time	Before Noon
Required Price Movement	+/- \$1.00 IN APPRIOPRIATE DIRECTION

Initial Measurements

= 1 or more samples tested do not meet the HPT required specification.				
Number of Trades that did not meet profitable requirments	4	of	20	Notes and Observations

EXAMPLE:

3/7/2025



Set up:	HPT CROSSOVER
Month Tested	September
WIN RATIO:	72.00%
Number of trades	18
Number of Loses	5
Set up:	HPT CROSSOVER
Month Tested	October
WIN RATIO:	72.00%
Number of trades	18
Number of Loses	5
Set up:	HPT CROSSOVER
Month Tested	November
WIN RATIO:	85.00%
Number of trades	20
Number of Loses	3
Set up:	HPT CROSSOVER
Month Tested	December
WIN RATIO:	73.00%
Number of trades	15
Number of Loses	4
Set up:	HPT CROSSOVER
Month Tested	January
WIN RATIO:	75.00%
Number of trades	16
Number of Loses	4
Set up:	HPT CROSSOVER
Month Tested	Febuary
WIN RATIO:	85.00%
Number of trades	20
Number of Loses	3
Set up:	HPT CROSSOVER
Month Tested	March
WIN RATIO:	82.00%
Number of trades	22
Number of Loses	4

Large Number Review

105/129= 81.39%

98 winning trades / 121 total trades

Set up:	HPT CROSSOVER
Month Tested	March
WIN RATIO:	82.00%

Required Specifications

Graphical	
Critical Level	Open Print
Moving Average Cross	5 & 21 EMA
Entry Criteria	RBI/GBI
Specifc Time	Before Noon
Required Price Movement	+/- \$1.00 IN APPRIOPRIATE DIRECTION

Initial Measurements

= 1 or more samples tested do not meet the HPT required specification.				
Number of Trades that did not meet profitable requirments	1	of	22	Notes and Observations

Initial Measurements

3/3/2025



Notes

- Closing Below 50 EMA

Set up:	HPT CROSSOVER
Month Tested	March
WIN RATIO:	82.00%

Required Specifications

Graphical	
Critical Level	Open Print
Moving Average Cross	5 & 21 EMA
Entry Criteria	RBI/GBI
Specfic Time	Before Noon
Required Price Movement	+/- \$1.00 IN APPRIOPRIATE DIRECTION

Initial Measurements

= 1 or more samples tested do not meet the HPT required specification.				
Number of Trades that did not meet profitable requirments	2	of	22	Notes and Observations

Initial Measurements

3/4/2025



Notes

- Price is "Below" the 1 hr 9 DEMA moving average
- Healthy 5 min trend led to healthy down

Set up:	HPT CROSSOVER
Month Tested	March
WIN RATIO:	82.00%

Required Specifications

Graphical	
Critical Level	Open Print
Moving Average Cross	5 & 20 EMA
Entry Criteria	RBI/GBI
Specifc Time	Before Noon
Required Price Movement	+/- \$1.00 IN APPRIOPRIATE DIRECTION

Initial Measurements

= 1 or more samples tested do not meet the HPT required specification.				
Number of Trades that did not meet profitable requirments	3	of	22	Notes and Observations
				Price is BELOW the 1 hr 9DEMA Sellers defended the HPT CROSSOVER

Initial Measurements

3/5/2025



Notes

- Choppy morning (NO RBI/GBI)
- Healthy 5 Minute trend

Set up:	HPT CROSSOVER
Month Tested	March
WIN RATIO:	82.00%

Required Specifications

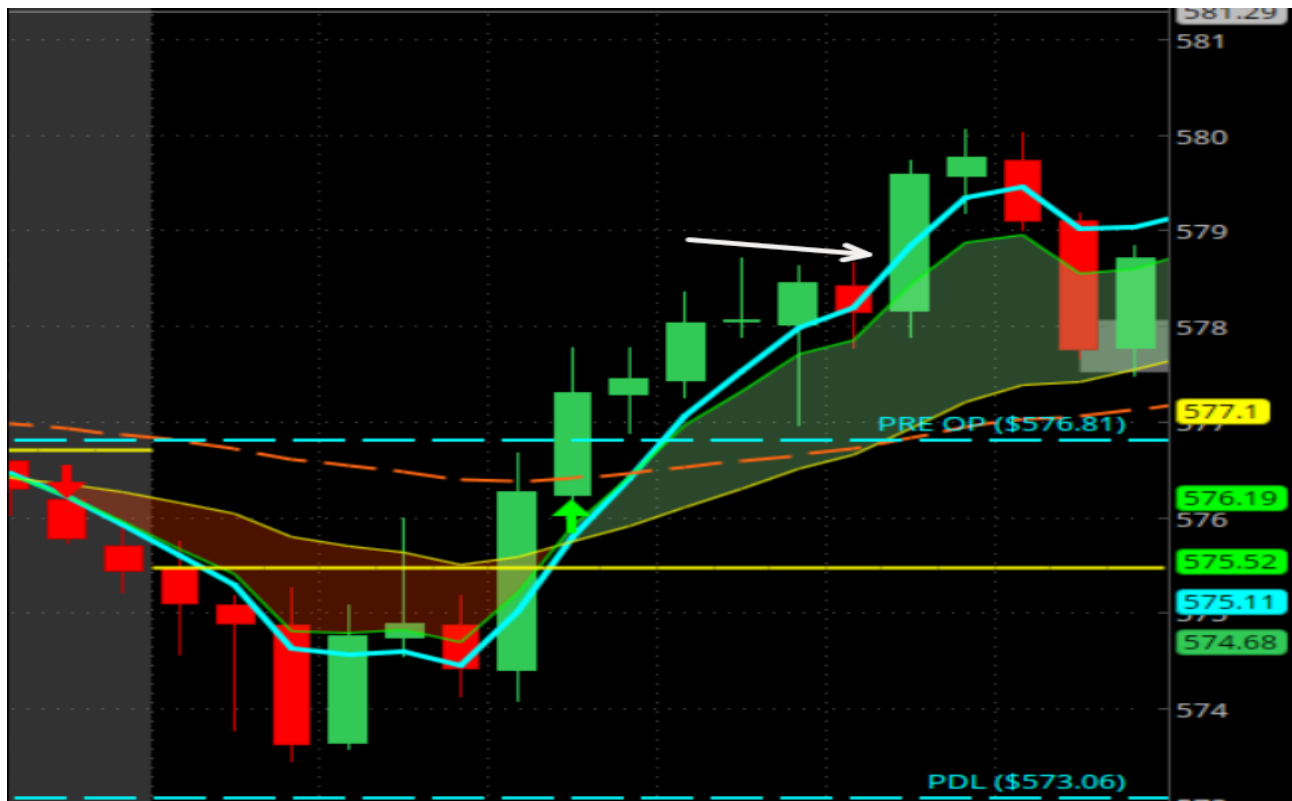
Graphical	
Critical Level	Open Print
Moving Average Cross	5 & 20 EMA
Entry Criteria	RBI/GBI
Specifc Time	Before Noon
Required Price Movement	+/- \$1.00 IN APPRIOPRIATE DIRECTION

Initial Measurements

= 1 or more samples tested do not meet the HPT required specification.				
Number of Trades that did not meet profitable requirments	4	of	22	Notes and Observations
				Price is BELOW the 1 hr 9DEMA Sellers defended the HPT CROSSOVER

Initial Measurements

3/6/2025



Notes

- Healthy 5 minute trend
- Price is "above 1 hr 9 dema

Set up:	HPT CROSSOVER
Month Tested	March
WIN RATIO:	82.00%

Required Specifications

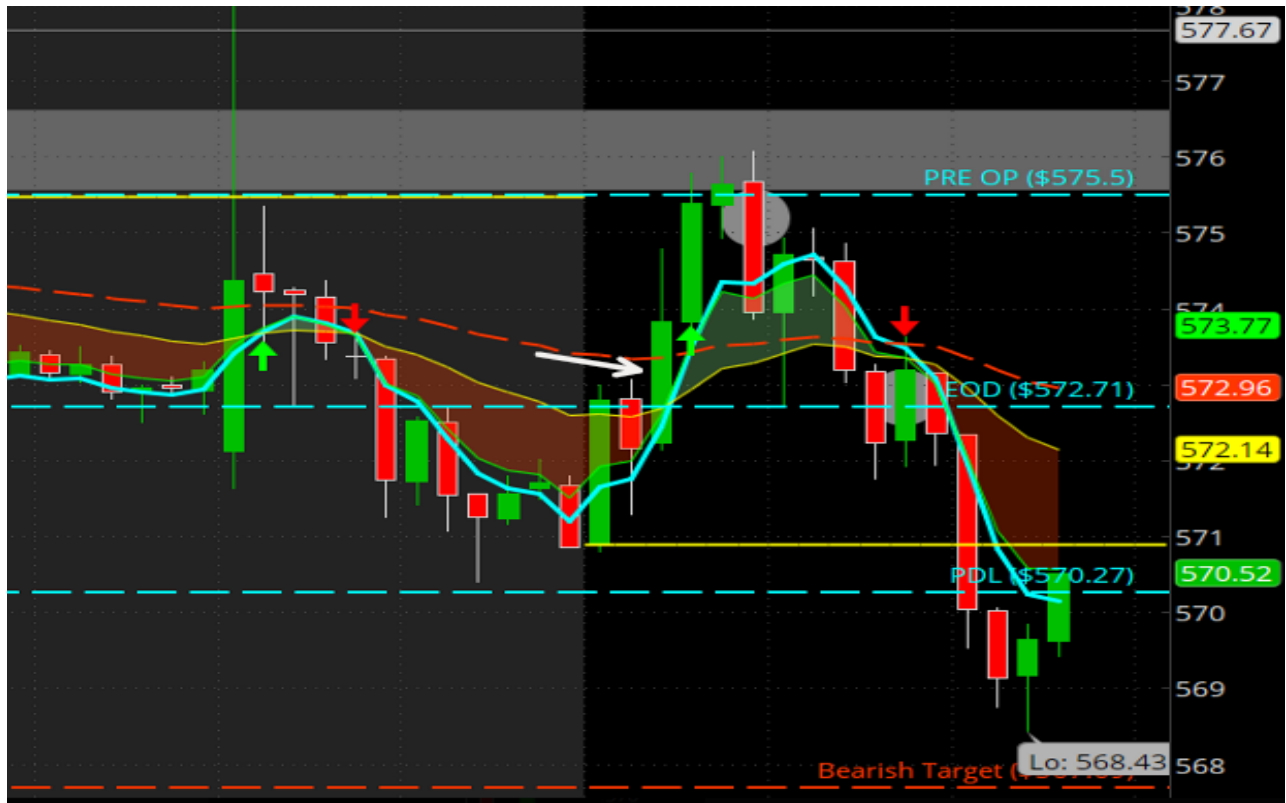
Graphical	
Critical Level	Open Print
Moving Average Cross	5 & 20 EMA
Entry Criteria	RBI/GBI
Specifc Time	Before Noon
Required Price Movement	+/- \$1.00 IN APPRIOPRIATE DIRECTION

Initial Measurements

= 1 or more samples tested do not meet the HPT required specification.				
Number of Trades that did not meet profitable requirments	5	of	22	Notes and Observations
				Price is below the 1 hr 9DEMA sellers defended the HPT CROSSOVER

Initial Measurements

3/7/2025



Notes

- Healthy 5 minute trend
- Price is "above 1 hr 9 dema"

Set up:	HPT CROSSOVER
Month Tested	March
WIN RATIO:	82.00%

Required Specifications

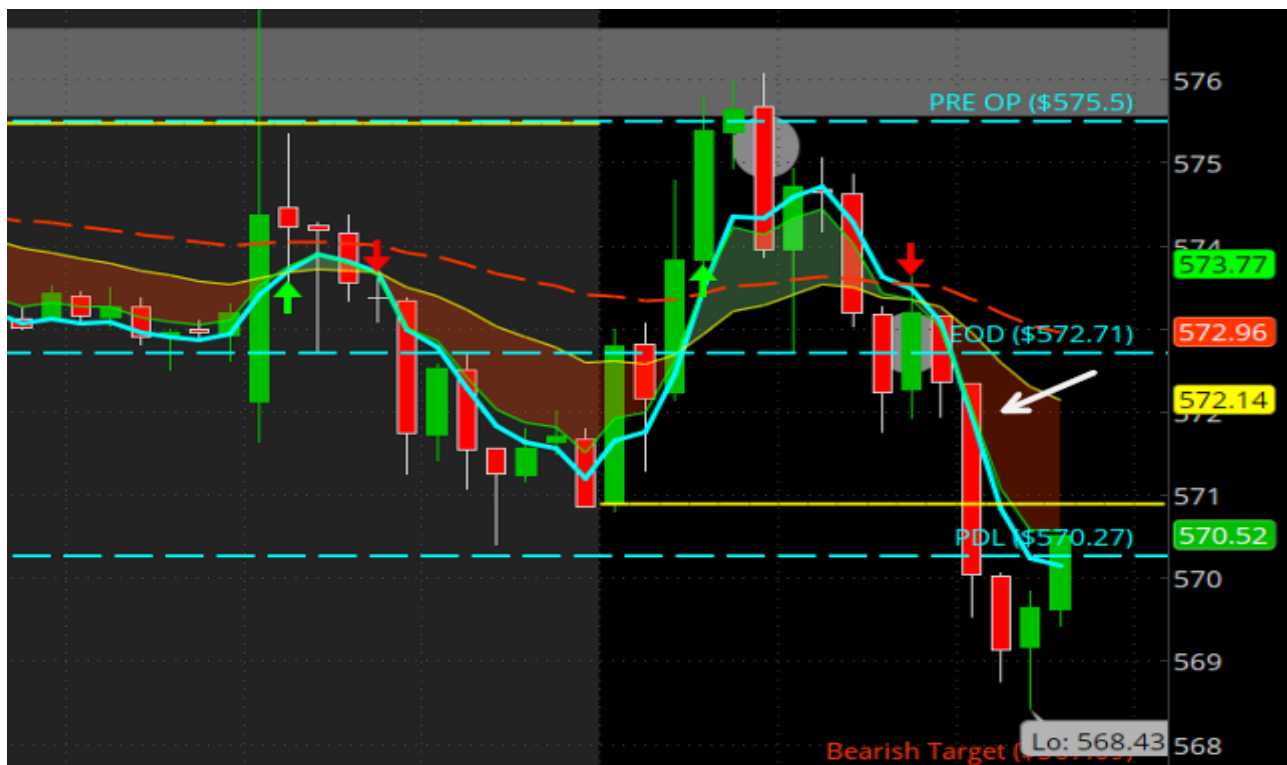
Graphical	
Critical Level	Open Print
Moving Average Cross	5 & 20 EMA
Entry Criteria	RBI/GBI
Specfic Time	Before Noon
Required Price Movement	+/- \$1.00 IN APPRIOPRIATE DIRECTION

Initial Measurements

= 1 or more samples tested do not meet the HPT required specification.				
Number of Trades that did not meet profitable requirments	6	of	22	Notes and Observations
				Price is above the 1 hr 9DEMA buyers DID NOT defend the HPT CROSSOVER

Initial Measurements

3/7/2025



Notes

- Healthy 5 min trend
- Below hr 9 DEMA, buyers defended
- Closing below 50 EMAs

Set up:	HPT CROSSOVER
Month Tested	March
WIN RATIO:	82.00%

Required Specifications

Graphical	
Critical Level	Open Print
Moving Average Cross	5 & 20 EMA
Entry Criteria	RBI/GBI
Specifc Time	Before Noon
Required Price Movement	+/- \$1.00 IN APPRIOPRIATE DIRECTION

Initial Measurements

= 1 or more samples tested do not meet the HPT required specification.				
Number of Trades that did not meet profitable requirments	7	of	22	Notes and Observations
				After buyers "lost open print" Sellers showed dominance

Initial Measurements

3/10/2025



Notes	96/118= 81.36%
-------	----------------

Healthy 5 min trend
Below hr 9 DEMA, sellers defended
50 EMA Rejection

Set up:	HPT CROSSOVER
Month Tested	March
WIN RATIO:	82.00%

Required Specifications

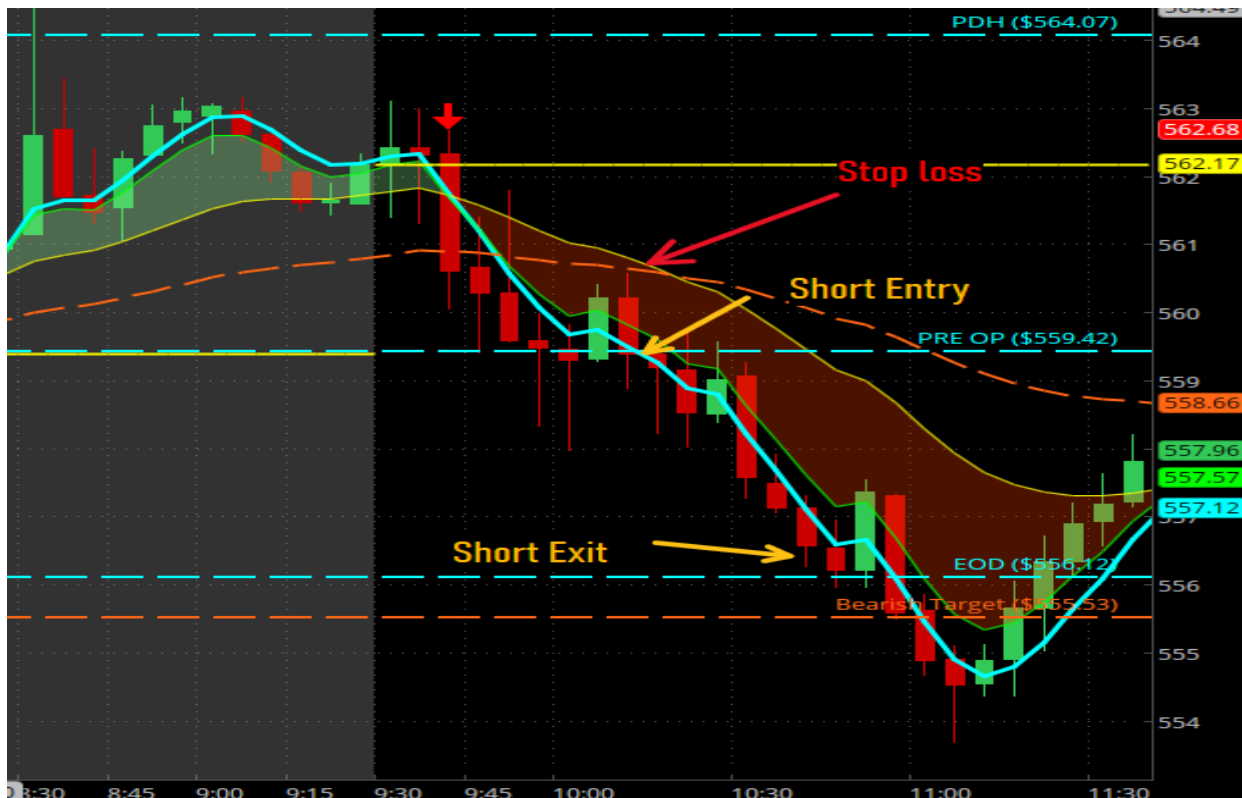
Graphical	
Critical Level	Open Print
Moving Average Cross	5 & 20 EMA
Entry Criteria	RBI/GBI
Specfic Time	Before Noon
Required Price Movement	+/- \$1.00 IN APPRIOPRIATE DIRECTION

Initial Measurements

= 1 or more samples tested do not meet the HPT required specification.				
Number of Trades that did not meet profitable requirments	8	of	22	Notes and Observations
				Price is above the 1 hr. 9DEMA, buyers DID NOT DEFEND "HPT Cross"

Initial Measurements

3/12/2025



Notes

Healthy 5 min trend
Below hr 9 DEMA, sellers defended
50 EMA Rejection

Set up:	HPT CROSSOVER
Month Tested	March
WIN RATIO:	82.00%

Required Specifications

Graphical	
Critical Level	Open Print
Moving Average Cross	5 & 20 EMA
Entry Criteria	RBI/GBI
Specfic Time	Before Noon
Required Price Movement	+/- \$1.00 IN APPRIOPRIATE DIRECTION

Initial Measurements

= 1 or more samples tested do not meet the HPT required specification.				
Number of Trades that did not meet profitable requirments	9	of	22	Notes and Observations
				Price is below the 1 hr 9DEMA sellers did defend the HPT CROSSOVER

Initial Measurements

3/13/2025



Notes

Healthy 5 min trend
Below hr 9 DEMA, sellers defended
50 EMA Rejection
EOD/ OPEN PRINT REJECTION

Set up:	HPT CROSSOVER
Month Tested	March
WIN RATIO:	82.00%

Required Specifications

Graphical	
Critical Level	Open Print
Moving Average Cross	5 & 20 EMA
Entry Criteria	RBI/GBI
Specifc Time	Before Noon
Required Price Movement	+/- \$1.00 IN APPRIOPRIATE DIRECTION

Initial Measurements

= 1 or more samples tested do not meet the HPT required specification.				
Number of Trades that did not meet profitable requirments	10	of	22	Notes and Observations
				Price is below the 1 hr 9DEMA, sellers DID NOT DEFEND the "HPT Cross"

Initial Measurements

3/14/2025



Notes

Healthy 5 min trend
Below hr 9 DEMA, sellers defended
50 EMA Rejection

Set up:	HPT CROSSOVER
Month Tested	March
WIN RATIO:	82.00%

Required Specifications

Graphical	
Critical Level	Open Print
Moving Average Cross	5 & 20 EMA
Entry Criteria	RBI/GBI
Specifc Time	Before Noon
Required Price Movement	+/- \$1.00 IN APPRIOPRIATE DIRECTION

Initial Measurements

= 1 or more samples tested do not meet the HPT required specification.				
Number of Trades that did not meet profitable requirments	11	of	22	Notes and Observations
				Price is above the 1 hr 9DEMA buyer did defend the HPT CROSSOVER

Initial Measurements

3/14/2025



Notes

Consolidation off open print
Stomping out of shorts provided great opportunity for longs
Bounce off the 50 EMA

Set up:	HPT CROSSOVER
Month Tested	March
WIN RATIO:	82.00%

Required Specifications

Graphical	
Critical Level	Open Print
Moving Average Cross	5 & 21 EMA
Entry Criteria	RBI/GBI
Specifc Time	Before Noon
Required Price Movement	+/- \$1.00 IN APPRIOPRIATE DIRECTION

Initial Measurements

= 1 or more samples tested do not meet the HPT required specification.				
	12	of	22	Notes and Observations

Initial Measurements

3/17/2025



Notes

- Shorting into open print
 Stomping out of shorts provided great opportunity for longs
 Fake out below 50 EMA led to upside push
 (Before 12 PM EST)

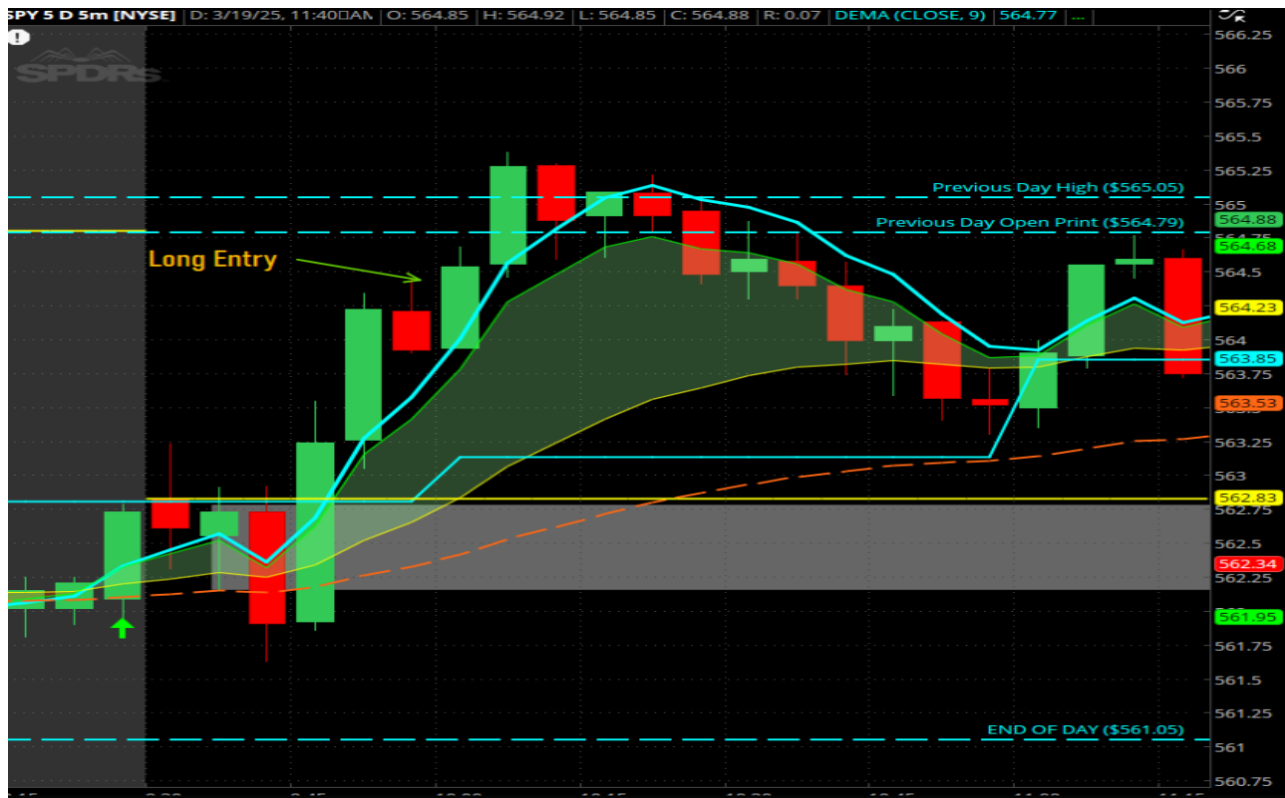
Set up:	HPT CROSSOVER
Month Tested	March
WIN RATIO:	82.00%

Required Specifications

Graphical				
Critical Level		Open Print		
Moving Average Cross		5 & 21 EMA		
Entry Criteria		RBI/GBI		
Specifc Time		Before Noon		
Required Price Movement		+/- \$1.00 IN APPRIOPRIATE DIRECTION		
Initial Measurements				
	= 1 or more samples tested do not meet the HPT required specification.			
Number of Trades that did not meet profitable requirments	13	of	22	Notes and Observations
				Price is above the 1 hr 9DEMA

Initial Measurements

3/19/2025



Notes

False break below 50 EMA
Crossover on the 1 hr TF
Healthy 5 min trend (no extensions from 9 DEMA)

Set up:	HPT CROSSOVER
Month Tested	March
WIN RATIO:	82.00%

Required Specifications

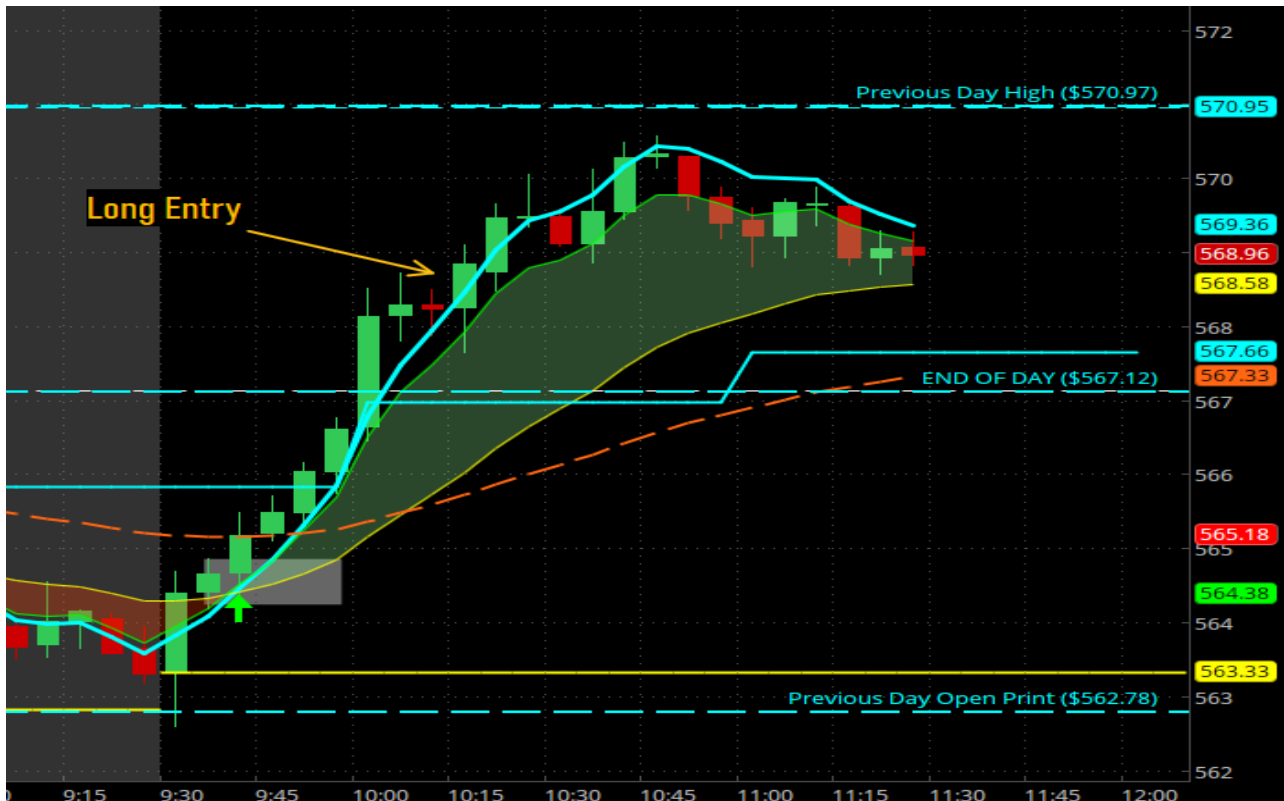
Graphical	
Critical Level	Open Print
Moving Average Cross	5 & 20 EMA
Entry Criteria	RBI/GBI
Specifc Time	Before Noon
Required Price Movement	+/- \$1.00 IN APPRIOPRIATE DIRECTION

Initial Measurements

= 1 or more samples tested do not meet the HPT required specification.				
Number of Trades that did not meet profitable requirments	14	of	22	Notes and Observations

Initial Measurements

3/20/2025



Notes

Close above 50 EMA
Healthy 5 min trend (no extensions from 9 DEMA)

Set up:	HPT CROSSOVER
Month Tested	March
WIN RATIO:	82.00%

Required Specifications

Graphical	
Critical Level	Open Print
Moving Average Cross	5 & 21 EMA
Entry Criteria	RBI/GBI
Specifc Time	Before Noon
Required Price Movement	+/- \$1.00 IN APPRIOPRIATE DIRECTION

Initial Measurements

	= 1 or more samples tested do not meet the HPT required specification.			
	15	of	22	Notes and Observations

Initial Measurements

3/24/2025



Notes

False break below 50 EMA (TRAPPING SELLERS)
Healthy 5 min trend (no extensions from 9 DEMA on 5 min TF and 1 hr TF)

Set up:	HPT CROSSOVER
Month Tested	March
WIN RATIO:	82.00%

Required Specifications

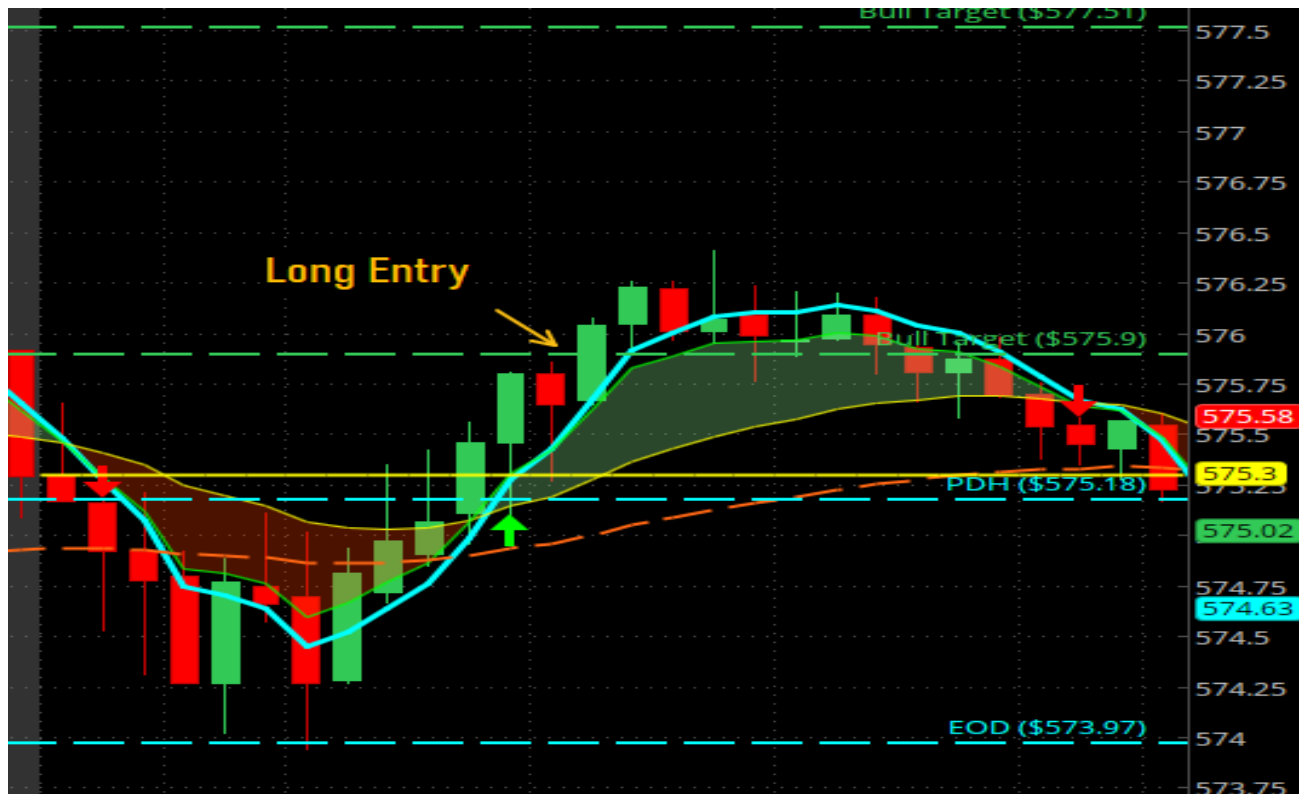
Graphical	
Critical Level	Open Print
Moving Average Cross	5 & 21 EMA
Entry Criteria	RBI/GBI
Specifc Time	Before Noon
Required Price Movement	+/- \$1.00 IN APPRIOPRIATE DIRECTION

Initial Measurements

= 1 or more samples tested do not meet the HPT required specification.				
Number of Trades that did not meet profitable requirments	16	of	22	Notes and Observations

Initial Measurements

3/25/2025



Notes

Healthy 5 min trend (no extensions from 9 DEMA on 5 min TF and 1 hr TF)

Set up:	HPT CROSSOVER
Month Tested	March
WIN RATIO:	82.00%

Required Specifications

Graphical	
Critical Level	Open Print
Moving Average Cross	5 & 20 EMA
Entry Criteria	RBI/GBI
Specifc Time	Before Noon
Required Price Movement	+/- \$1.00 IN APPRIOPRIATE DIRECTION

Initial Measurements

= 1 or more samples tested do not meet the HPT required specification.				
Number of Trades that did not meet profitable requirments	17	of	22	Notes and Observations

Initial Measurements

3/25/2025



Notes

Healthy 5 min trend (no extensions from 9 DEMA on 5 min TF and 1 hr TF)

Set up:	HPT CROSSOVER
Month Tested	March
WIN RATIO:	82.00%

Required Specifications

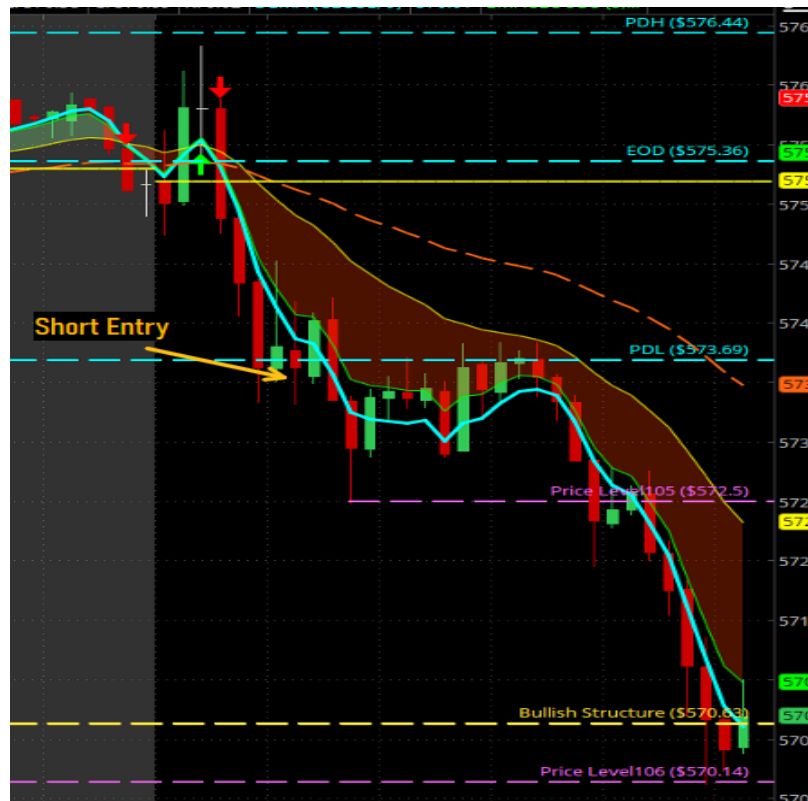
Graphical	
Critical Level	Open Print
Moving Average Cross	5 & 20 EMA
Entry Criteria	RBI/GBI
Specifc Time	Before Noon
Required Price Movement	+/- \$1.00 IN APPRIOPRIATE DIRECTION

Initial Measurements

= 1 or more samples tested do not meet the HPT required specification.				
Number of Trades that did not meet profitable requirments	18	of	22	Notes and Observations

Initial Measurements

3/25/2025



Notes

False break above 50 EMA (TRAPPING Buyers)
Healthy 5 min trend (no extensions from 9 DEMA on 5 min TF and 1 hr TF)
Price Respecting the EMA Cloud

Set up:	HPT CROSSOVER
Month Tested	March
WIN RATIO:	82.00%

Required Specifications

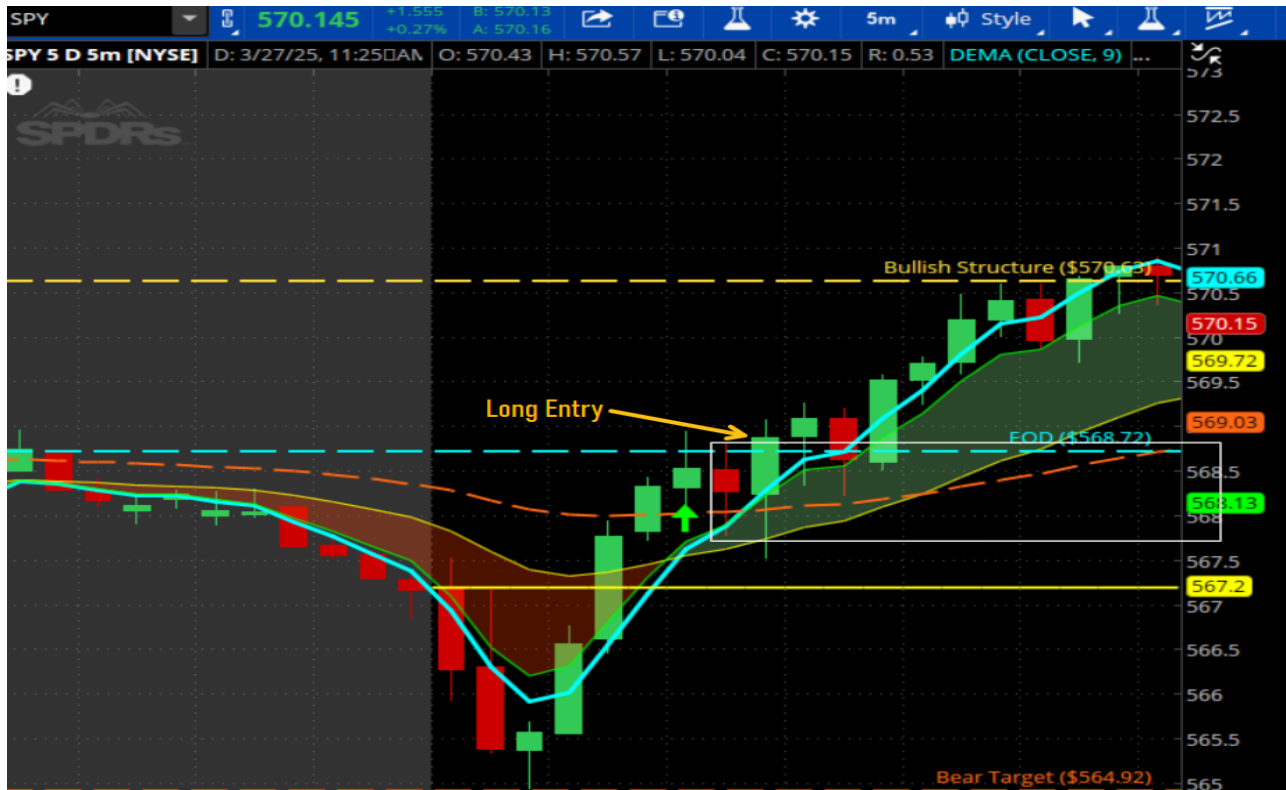
Graphical	
Critical Level	Open Print
Moving Average Cross	5 & 20 EMA
Entry Criteria	RBI/GBI
Specifc Time	Before Noon
Required Price Movement	+/- \$1.00 IN APPRIOPRIATE DIRECTION

Initial Measurements

= 1 or more samples tested do not meet the HPT required specification.				
Number of Trades that did not meet profitable requirments	19	of	22	Notes and Observations

Initial Measurements

3/27/2025



Notes

Healthy 5 min trend (no extensions from 9 DEMA on 5 min TF and 1 hr TF)
Price respecting the 9 DEMA
Price Respecting the EMA Cloud

Set up:	HPT CROSSOVER
Month Tested	March
WIN RATIO:	82.00%

Required Specifications

Graphical	
Critical Level	Open Print
Moving Average Cross	5 & 20 EMA
Entry Criteria	RBI/GBI
Specfic Time	Before Noon
Required Price Movement	+/- \$1.00 IN APPRIOPRIATE DIRECTION

Initial Measurements

= 1 or more samples tested do not meet the HPT required specification.				
Number of Trades that did not meet profitable requirments	20	of	22	Notes and Observations

Initial Measurements

3/28/2025



Notes

Off Open Print
Healthy 5 min trend (no extensions from 9 DEMA on 5 min TF and 1 hr TF)
Price respecting the 9 DEMA
Price Respecting the EMA Cloud

Set up:	HPT CROSSOVER
Month Tested	March
WIN RATIO:	82.00%

Required Specifications

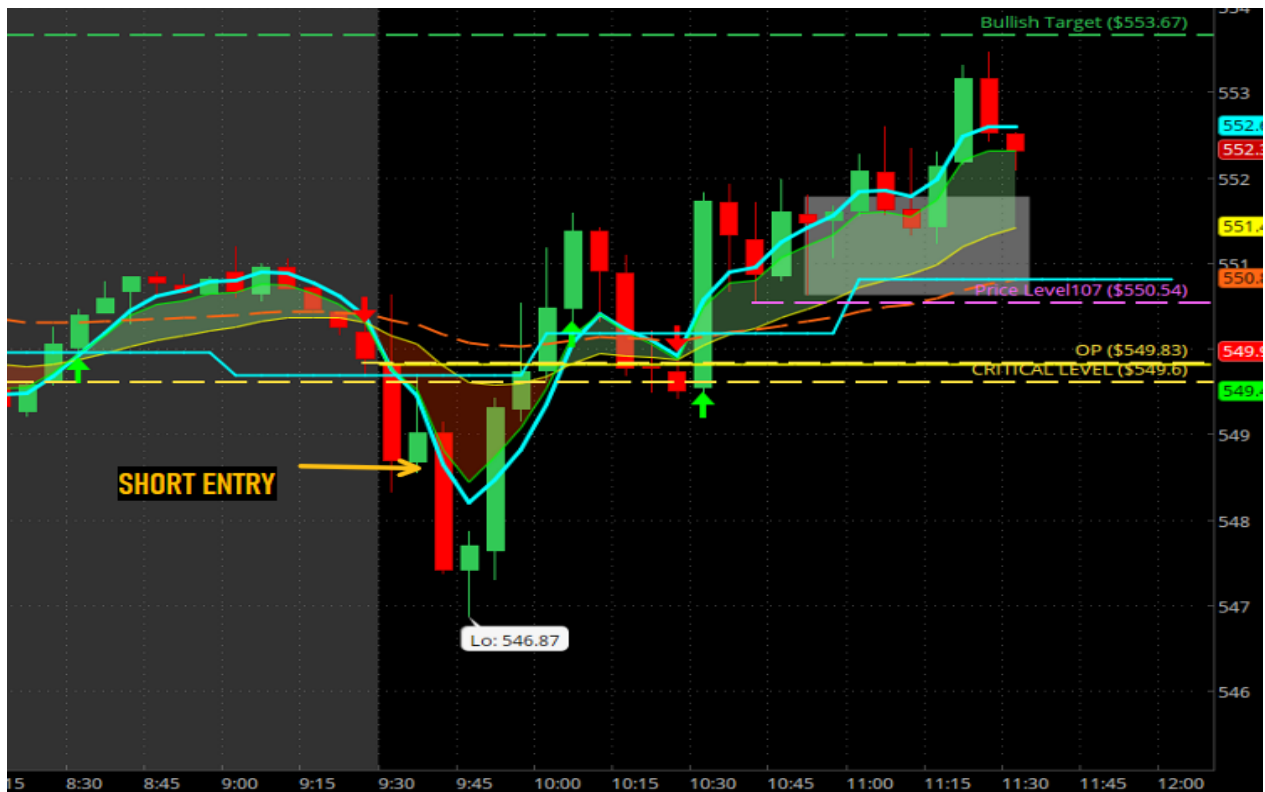
Graphical	
Critical Level	Open Print
Moving Average Cross	5 & 20 EMA
Entry Criteria	RBI/GBI
Specifc Time	Before Noon
Required Price Movement	+/- \$1.00 IN APPRIOPRIATE DIRECTION

Initial Measurements

= 1 or more samples tested do not meet the HPT required specification.				
Number of Trades that did not meet profitable requirments	21	of	22	Notes and Observations

Initial Measurements

3/31/2025



Notes

Off Open Print
 Healthy 5 min trend (no extensions from 9 DEMA on 5 min TF and 1 hr TF)
 Price respecting the 9 DEMA
 Price Respecting the EMA Cloud

Set up: HPT CROSSOVER

Month Tested March

WIN RATIO: 82.00%

Required Specifications

Graphical

Critical Level	Open Print
Moving Average Cross	5 & 20 EMA
Entry Criteria	RBI/GBI
Specifc Time	Before Noon
Required Price Movement	+/- \$1.00 IN APPRIOPRIATE DIRECTION

Initial Measurements

1 = 1 or more samples tested do not meet the HPT required specification.

Number of Trades that did not meet profitable requirments	22	of	22	Notes and Observations

Initial Measurements

3/31/2025



Notes

Off Open Print
 Healthy 5 min trend (no extensions from 9 DEMA on 5 min TF and 1 hr TF)
 Price respecting the 9 DEMA
 Price Respecting the EMA Cloud